

# Wyalong Public School

*"Resourceful, Resilient & Future Focused"*



Find us on:  
**facebook®**

**Week 10 Term 4 2017**

**\*\*THIS WEEK!\*\***

Tuesday 12 December

**PRESENTATION NIGHT**

**6.30PM S&C Club**

Wednesday 13 December

**ENRICHMENT DAY**

**(Mufti Day)**

Thursday 14 December

**POOL PARTY**

**11.30AM–2.30PM**

Friday 15 December

**STUDENTS LAST DAY**

**School Resumes**

**Tuesday 30th January  
2018**

**Contact:**

Principal: Meg Staples

George Bland Avenue

Wyalong NSW 2671

Phone: 0269 722 140

Email: [wyalong-p.school@det.nsw.edu.au](mailto:wyalong-p.school@det.nsw.edu.au)



***Opportunities are created here everyday!***

We will truly miss our year 6 students as they spread their wings and embark on the next chapter of their learning and we wish them all the best.

***A gentle reminder that the Presentation evening is tonight at the S&C Club starting at 6.30pm sharp. If you could be at the club no later than 6.15pm to have your child seated, that would be greatly appreciated.***

Final staffing arrangements for 2018 have been finalised and I'm thrilled to announce that classroom teachers will remain the same. Our focus next year continues to be on Quality Teaching, Data Analysis, Student Engagement and Student Improvement.

In closing, it has been wonderful to work with you all again, thank you all for being such wonderful and supportive parents within our Toppo School Community, I continue to be privileged as the Principal of such a progressive small school!

Merry Christmas & Happy New Year

Meg Staples,

Principal

***"Once a Toppo Kid always a Toppo Kid"***



# Assembly Awards



## Merit Awards:

*Hayley Wilton for improved writing.*

*Ryder Pettit for improved writing.*

*Willow Ambrose contributing to class discussions.*

*Jay Thacker for working hard to complete set tasks.*

*Georgia Manton for continued effort in all areas.*

*Bianca Dionela for being a conscientious caring students.*

## Students of the Week:

*Ava Hall*

*Laycee Wilton*

*Daniel Blackwood*

## Sports Awards:

*Jimmy Davies*

*Lachlan Rennie*

*Luke Reid*



Congratulations to students of the week Ava, Laycee & Daniel

## Students of the week!



*Students that have sparkled this week!*



*Congratulations to the 4,5,6 class, they are looking after Gerald this week!!*

**Silver Pennant**

Congratulations Hayley, Luke & Jimmy!!



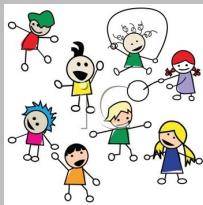


# Parent Information



Thank you to the a students and their families who came and sang so beautifully at the Carols by Candlelight on Sunday night. Your support of school and community is greatly appreciated.

**ENRICHMENT DAY**  
**13TH DECEMBER 2017**



**TOPPY SCHOOL**  
**POOL PARTY**

**Thursday 14th December 2017**



**Last Day  
of School!**

**FRIDAY 15th DECEMBER 2017**

**back to  
School**



**TUESDAY 30TH JANUARY 2018**

# Community Information



**L&R GROUP**  
LEISURE & RECREATION GROUP  
A fresh approach to management

**SCHOOLS OUT FOR THE SUMMER**

LET'S HAVE A

**POOL PARTY**

**FRI 15 DEC**

**\$10\* ENTRY INCLUDES WATER SLIDE DJ OTHER FUN & GAMES + A FREE SLUSHIE**

**8PM – 10PM**

Children under the age of 10 must be accompanied by a guardian 16 years or over.

\* As this event is outside of normal operating hours, please note season tickets are not valid for entry.



**FOOD FOR FINES**

**You bring the food - we'll waive the fine!**  
**Pay your Library fines with food instead of \$\$\$**

From November 20 ~ December 16, 2017 pay off your overdue fines with a donation of non-perishable food items.

These items will be donated to charity to be distributed to those in need over the festive season.

**BLAND SHIRE COUNCIL**  
west wyalong

**riverina regional library**

# WEEKLY SUDOKU



## REINDEER SUDOKU

		E			
		M			X
L			B		
	B				M
		L			
			M		E

BLIXEM

				R	
	S				
	H		E		
				A	
R					S
	A	E		H	

DASHER



DANCER

	C				
N			D		
C					N
E	D				
A	E			C	D

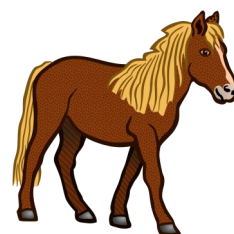
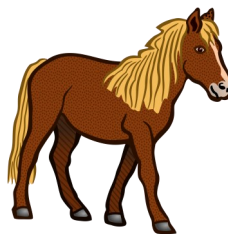
SLEIGH

S					
	G	I	S		
				S	
G			H		
				L	E
			G		





THANK YOU



Wyalong Public School Community partnership  
with  
the Riding for the Disabled Association





# At Wyalong Public School we believe your child is SOMEBODY!



As a small school, we cater to each child's individual strengths  
by delivering personalised learning and preparing students to be

**resourceful, resilient and future focused**. Our Teachers recognise that it is their high expectations  
and quality teaching that influence the best student outcomes.

***Your child's educational experience is our core business; we strive to offer students at our school a  
quality educational experience and opportunities for learning that only a small school can offer.***



*Miss Meg Staples*  
*Principal*



*Mrs Regina Ray*  
*School Administration Manager*  
*Mrs Lynne Helyar*  
*(Monday)*



*Mrs Melissa Blackwood*  
*Teacher K/1*



*Miss Rebecca Lamb*  
*Teacher 2/3/4*



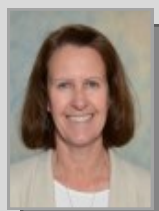
*Mrs Melissa Stanton*  
*School Learning Support Officer*



*Mrs Lacey Petitt*  
*Teacher 4/5/6*



*Miss Kheely Turner*  
*School Learning Support Officer*



*Mrs Amanda Cooper*  
*Learning &  
Support Teacher;  
& Teacher of  
Music and Band*  
*Mrs Michelle Nunn*  
*Instructional Leader*



*Mrs Susan Low*  
*Librarian*



*Mrs Lyn Anderson*  
*School Administration Officer*



*Mr Pat Mason*  
*Teacher Physical Education*