



Wyalong Public School

At Wyalong Public School students, staff and the community are respectful, responsible and resilient learners. We have high expectations of ourselves and others. We are life-long learners and responsible citizens.

Everyone is someone at Wyalong Public School!

Week 8, Term 4

29th November 2022

Primary Excursion

Our students and staff had a wonderful time at Red Hill Environmental Centre last week. The students were commended on their behaviour, manners and knowledge by the staff at the centre.

The students have written a recount of the excursion on the next page.

Thank you to Miss Mitchell, Mrs Pettit and Gerard for giving up their family time to take the students on camp.

Infants Excursion

On Friday all students K-2 travelled by bus to Griffith for their excursion. First stop was Pioneer Park where they participated in old fashioned games, went on a train ride around the museum and completed activities about the exhibits in the Italian Museum. Next, they went to Family Funland where lunch was served, students went on the bouldering course, played laser tag and experienced the dark ride. Throughout the excursion students were commended for their excellent behaviour. Well done K-2!

Year 5 Speeches

This Thursday at 9am, our Year 5 students will be delivering their Captain Speeches. Parents and the wider community are invited to attend to listen to the speeches.

NDIS Connection Desk

Next Thursday, 8th December, from 1-3pm our families have the opportunity to have a personal meeting with an NDIS co-ordinator. There will be four half-hour time slots you can book. Please ring the school if you would like to make an appointment.

Year 6 Fundraiser – Nacho Lunch Orders

On Friday, the Year 6 students will be selling nachos for lunch. An order form has gone home and will need to be returned along with money by Wednesday. No late orders will be accepted.

The Time for Giving

We are now asking for donations of non-perishable items for a Christmas hamper that the school will donate to St Vincent de Paul Society. Please bring your items to the front office.

Christmas in Wyalong

The students have been invited to sing Christmas Carols at 'Christmas in Wyalong' on Saturday 3rd December at 6:30pm. Slee street will be closed off in front of the police station. There will be market stalls, face painting, kids' activities and food stalls. The jail and Museum will be open to visit. It would be wonderful to see our students performing on the night. Please note they can wear Christmas attire.

Students will also be performing at the Hospital Auxiliary Carols by Candlelight on Sunday 11th December, 7.30pm at Barnardo Park. Students are to wear full school uniform for the evening's performance. An RSVP sheet will go home this week to ensure we have enough students attending.

P&C Meeting

This evening will be our last P&C meeting for the year. Everyone is welcome to attend, 5:30pm in the library.

Family Fun Day

The P&C are holding a family fun day on Sunday 4th December at the Bowling Club from 3:30pm – 6:30pm. Everyone is welcome to attend. There will be disco music for the children, a game of bare foot bowls and a free sausage sizzle. Please come along for a great afternoon of fun.

Have a wonderful week!

Kylie Taylor
Principal



Swimming for Sport

Tuesday 29th November 2022

Tuesday 6th December 2022

Tuesday 13th December 2022

Presentation Night

Wednesday 14th December 2022

Enrichment Day

Thursday 15th December 2022

Pool Party – Last Day of Term

Friday 16th December 2022

ATTENDANCE MATTERS

Every Student. Every Day.



Wyalong Public School

2022 Presentation Night

*The evening will be held at the
West Wyalong Services & Citizens Club
Wednesday 14th December 2022 at 6.30pm*

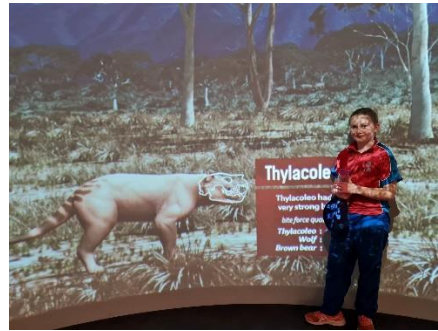


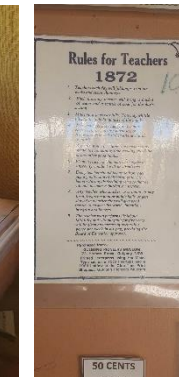
Thursday 15th December 2022



Friday 16th December 2022







3-6 Red Hill Conservation Centre Excursion

At 7 am last Wednesday 3-6 students embarked on their excursion to Red Hill Conservation Centre in Gulgong via Wellington caves to enjoy a 3 day and 2 night excursion full of historical and life learning experiences.

Wellington Caves

The students split up into four groups, the first experience was the lush caves full of crystals. Paul, our tour guide, talked about how stalactites grow down from the cave ceiling, while stalagmites grow up from the cave floor. When you touch a crystal, it will start to go black due to oils on our skin interrupting its formation. There was this one crystal that stuck in my mind, it was a crystal that had tree roots growing off it sideways. After the caves, we went down to the science lab and got to do a little treasure hunt, trying to find little bones and crystallised bat poo, guano, in the dirt. Then we were off to the Japanese gardens, were trying to find the mulberry tree, once we found the berries, we were picking them off and eating them. Finally we explored the fossil track, identifying the different types of fossils hidden in the rocks.

Dormitory Life

We arrived safely at the quaint town of Gulgong where Karen, our teacher for the next three days, welcomed us. A happy snap was taken in front of the centre's sign and then the rules and expectations were explained around the yarning circle which was very similar design to our school's. The boys and girls were then split and eagerly taken to their dormitory which would be home for the next two nights. Can you imagine 19 boys in one room? Now imagine the smell!!! The girls' room was immaculately clean and well organised! Life in the dormitory was very social and in the evenings a few of us needed a stern reminder that it was sleep time.

Gold panning

We met up at the rotunda where we were split into 2 groups and made our way up the hill, where we were given a tarp, a length of rope and 4 pegs. Using these supplies, we needed to construct a shelter to protect us from the elements. We used the trees as anchor points to hold our tent up. Following the shelter activity, it was time to make our fortune and find gold! We were each given a pan with rock and sediment from previously mined soil. Leaning over the water supply, we filled our pan with water before swirling our pan around to remove larger sediments and rock, to leave behind only small debris. Greg the teacher explained that gold panning was a very challenging and frustrating process to be involved in and a lot of patience was required. One student, Oliver was lucky enough to find a small speck of gold hidden in the bottom of his pan. Unfortunately, we did not leave having found our fortune.

Butter/scone

In the kitchen there was old equipment displayed which had once been an important part of someone's kitchen back in the 1800s. These items were used to keep food fresh, whisk eggs, slice veggies and mince meat. As a group we made lemonade scones, using flour, eggs and lemonade. We were broken up in to 5 groups to attempt to make our own butter from scratch. We looked at a container of butter before starting and the ingredients which were listed. Can you believe 12 ingredients were needed to make butter? Amy, the teacher, gave us a glass jar filled with a cup of cream. Our job was to shake the jar until it was silent. This involved a lot of muscle. Once it was silent, you had to continue until it came together as a ball. Amy, then drained the butter milk and rinsed the butter with cold water to remove the left-over fat. A small pinch of salt was added to the jar to help preserve the quality of the butter for longer. Using wooden paddles, we squeezed excess moisture out and tried to shape it into a square. We only needed 3 ingredients to make our butter. We got to enjoy our freshly made butter on our scone with jam.



Weapons and Tools

Up on the big oval we were lucky enough to have the opportunity to learn how to throw a boomerang and spear correctly with the assistance of Pete. He explained the importance of using the correct throwing technique compared to using too much muscle. For the boomerangs you put it over your shoulder and throw with a flick of the wrist. It's not about whose muscles are bigger, it's about the technique. With the spear we used the woomera, a spearing-throwing device to enable a spear to travel further. To support the weight of the spear, you hold the top end of the woomera and the other hand on the middle of the spear. You pull the woomera back and push the spear forward, focusing on the spot you want it to land. It is important to make sure no one is behind you, then call out when you are about to throw.

Museum

Once we arrived at the Gulgong Museum, we were surrounded by wonderful features such as artefacts that had been used many years ago. We sneaked around to the back where all the big machinery and transport items were kept. We were then given a map and an Ipad to take photos of the things we had discovered. Once they had picked the teams, we set off to have a look at what we could find. The teams rushed off with only ten minutes to find the items which matched the clues. Students needed to follow the map carefully, as the museum was like a rabbit warren, with rooms off rooms everywhere. The number of incredible artifacts and items, including three original relocated buildings, captured the essence of the early history of European explorers and life in the early to late 1800s. As we walked back up the hill, we saw one of the narrowest main streets in New South Wales.

1872 Schooling

We were transformed into students who attended school back in 1872. The girls had to wear a shirt, a skirt, an apron, and a bonnet hat, whilst the boys had to wear a shirt, pants, a hat and a vest. Students who got the chance of being educated at school were seen to be very lucky and privileged. The teachers were incredibly strict! If you were to misbehave a little bit, you would have got the cane across the knuckles. Your hands and attire were inspected before you entered the school. It was expected that your handwriting would have to be perfect and if you laughed at inappropriate times, it showed your lack of intelligence. During class, the boys learnt to tie knots, whilst the girls performed needle work. These skills were required in everyday life back then. The students used ink wells and a quill to write their written work with and a slate board.

Connection through Art

When Pete started drawing up the meeting circle I was so invested, if someone had of tried to speak to me, they would have got no answer, not even a flutter of the eye. Then he started drawing songlines up that connected us all together. We were all passed a piece of chalk and told to draw our homes and our songlines on the path to the meeting place. All of us were connected by songlines in a way. We were told to walk along the songlines to another person's home. After a few minutes we stopped and went through whose home everyone was in and at one point Ryder was at Summer's home and Summer was at Ryder's home showing their strong connection. For one of the rotations, we had to paint our home. I painted my nan's house and my mum's house and connected them by songlines. I also drew my family members in the house, as well as some things I like, such as rain, stars, animals and plants. This experience was truly worthwhile, and I would love to visit Red Hill Environmental Education Centre again.

Collaboratively written by 3-6 students.

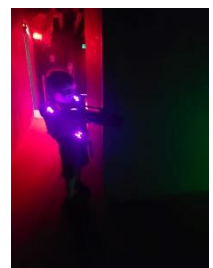
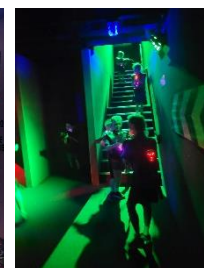


Infants excursion to Griffith

griffith
Pioneer Park Museum

ROCK
CLIMBING

LASER
TAG



West Wyalong Hospital Auxiliary
Carols by Candlelight
 Sunday December 11
 7.30pm at Barnado Park
 Gold Coin donation for entry
 Please bring your own chair or rug
 All Welcome

In case of inclement weather, the Carols will be held at the
 West Wyalong S&C Club Auditorium



DISCO
SAT 10TH DEC
 West Wyalong S&C Club - Auditorium

Juniors	Seniors
3yrs - 7yrs	8yrs - 14yrs
5.00 - 6.30pm	6.30 - 8.30pm

adult supervision

\$5 entry fee

Drinks, chocolates & chips for sale

Glow products for sale

Photo stall \$3 per instant photo

MUSIC SUPPLIED BY DARREN MOORE

WEST WYALONG NETBALL
 REPRESENTATIVE TEAMS



Bland Shire Library

**2022 Christmas
 FOOD & GIFTS APPEAL**

Please place your non-perishable in-date
 FOOD in the basket under our Christmas
 tree before Friday 16th December



and

Please place your unwrapped Christmas
 gifts for children up to the age of 10 years
 under our Christmas tree before
 Friday 16th December



Thank you




BLAND SHIRE LIBRARY

**2022-23
 SUMMER READING
 CHALLENGE**

**FOR BOYS AND GIRLS
 5 - 16 YEARS**

FREE

**LOADS OF
 ACTIVITIES AND
 PRIZES**

LAUNCH PARTY / REGISTRATION DAY
WEDNESDAY 23 NOVEMBER 2022
3.30PM

**FOR FURTHER INFORMATION OR TO
 RSVP PHONE 69790272**

Bland Shire Library SRC Program awarded Community Recognition Statement
 by Member for Cootamundra, Steph Cooke MP (2021)



Saturday 3rd December from 6pm

CHRISTMAS In Wyalong

WYALONG
ADVANCEMENT
GROUP

Visit the
Museum and Wyalong
Jail
Market Stalls - Town
Band - Christmas Carols
- Face painting -
Sausage sizzle -
Raffles...and more!

Contact Michelle on
0414 296 832

To book a stall \$10.00 ph. 0269 723 118 or 0414 296 832
Inclement weather the event will be held in the Toppo Hall.



Virtual NDIS ConnectionDesk at Wyalong Public School

Do you have questions about the NDIS that you would like to ask? We can help you.

We encourage you to come along and talk with a Local Area Coordinator from the NDIS. Questions can range from how to access NDIS and evidence of disability that would be required.

These meetings will be held via a virtual platform with the NDIS representative and you will have a school staff member sitting with you to support you.

You can also find out about the range of services available including supports, which assist young people in your community.

It's simple -just make an appointment!

Dates: Thursday 8 December 1 – 3pm

If you are interested please contact the school to make an appointment on: 6972 2140



Brought to you by Wyalong Public School P&C



Family Fun Day

Sunday 4th December

3:30pm - 6:30pm

West Wyalong Bowling Club

Bring the family down for an afternoon of social fun. Free sausage sizzle.

Barefoot
Bowls

Disco
Music

Icecream
Van

1st Saturday
in March



Find us on
Facebook



Brought to you by:
Wyalong Public
School P&C